



# Texan Stone LLC

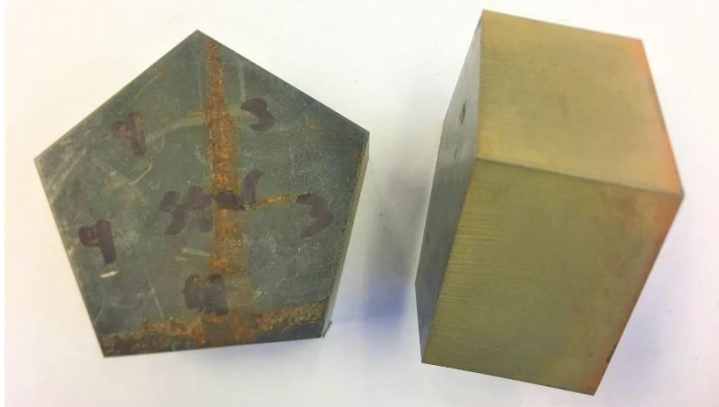
11806 Wilcrest Drive, Suite 202, Houston, TX 77031  
Phone: 281-741-0226 Email: Mani@texanstone.com



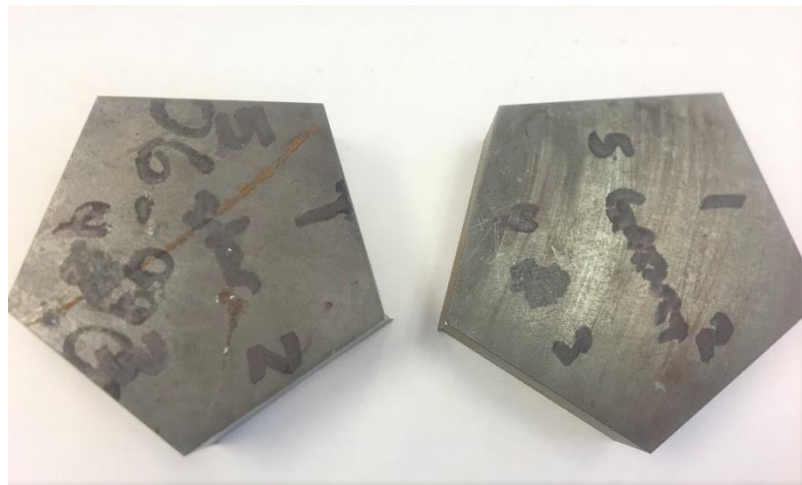
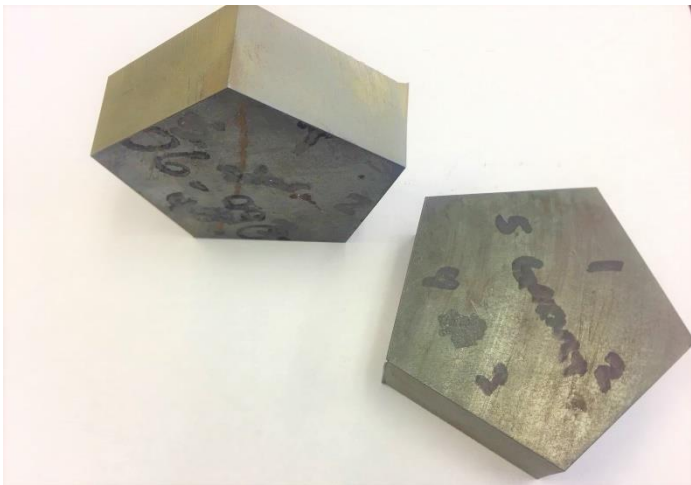
## ABRASIVE WATERJET PERFORMANCE STAR-O-RIGHT & GARNET



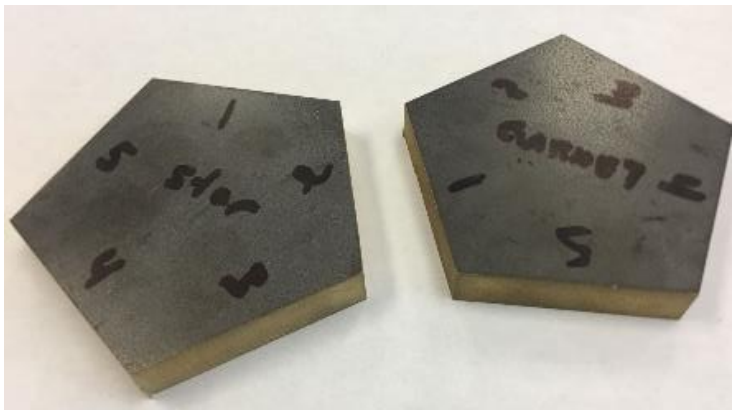
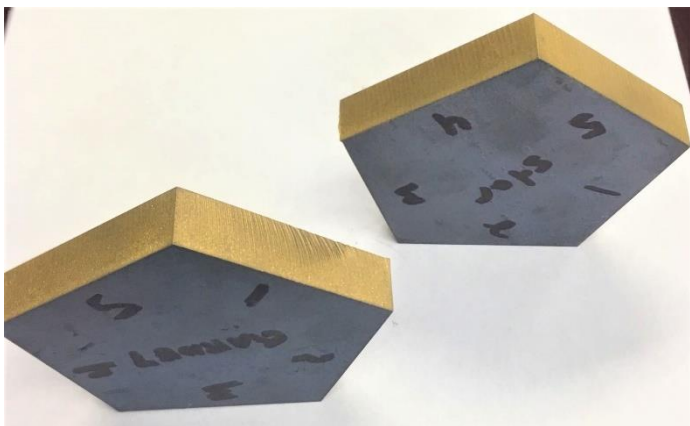
"TEXAN STONE" waterjet cutting with STAR-O-RIGHT



1.5 inch carbon steel



1 inch carbon steel



1/2 inch Bronze

**Texan Stone STAR-O-RIGHT & GARNET has excellent waterjet cutting performance with thickness Steel.**



# Texan Stone LLC

11806 Wilcrest Drive, Suite 202, Houston, TX 77031  
Phone: 281-741-0226 Email: Mani@texanstone.com



## STAR-O-RIGHT (Staurolite) waterjet testing

Omax 55k .014 jewel/.030 mixing tube

feed rate Staurolite is 0.9lbs per min.

feed rate garnet is 0.8lbs per min.

1/2" Bronze		
SIDE	STAR-O-RIGHT	GARNET
1	13.2	13.89
2	11.32	11.91
3	7.1	7.47
4	5.1	5.37
5	3.95	4.15

1" carbon steel		
SIDE	STAR-O-RIGHT	GARNET
1	3.76	3.96
2	3.23	3.39
3	2.02	2.13
4	1.45	1.53
5	1.13	1.18

1.5" carbon steel		
SIDE	STAR-O-RIGHT	GARNET
1	1.04	1.09

We used STAR-O-RIGHT to cut several actual jobs with complete success, 10 gauge stainless, 1/4" carbon steel and 2 other jobs from gauge carbon steel, there was no difference between STAR-O-RIGHT and garnet on these cuts.

We were also successful in cutting 7/8 stone countertop.



# Texan Stone LLC

11806 Wilcrest Drive, Suite 202, Houston, TX 77031  
Phone: 281-741-0226 Email: Mani@texanstone.com



## India Best Garnet 50-80 Mesh

### Product specification

Chemical Analysis		Sieve Analysis Report			
Elements	%	MM	ASTM	Retained(%)	Cum.(%)
SiO <sub>2</sub>	36-37	0.600	+30	0.00	0.00
Al <sub>2</sub> O <sub>3</sub>	21-22	0.500	+35	0.00	0.00
Fe <sub>2</sub> O <sub>3</sub>	32-33	0.420	+40	0.04	0.04
MgO	7.0-7.5	0.300	+50	6-12	6-12
CaO	1.0-1.2	0.250	+60	36-37	42-48
TiO <sub>2</sub>	0.52	0.210	+70	29-30	71-78
LOI	0.02	0.180	+80	21-22	92-99
		0.150	+100	4-5	98-99
		0.120	+120	1-2	99-100
		<0.0120	<+120	0-1	100.00

Mineral Composition		Physical Analysis	
Mineral	% b.y Weight	Test	Result
Garnet	94-95	Specific Gravity	4.1
Ilmenite	3-3.5	Bulk Density	2.30 gm/cm <sup>3</sup>
Quartz	0.5-0.60	Hardness	8 Moh scale
Sillimanite	0.80-1.00	Conductivity	39μS/cm at 25.5 °C
Others	0.50-0.63	Chloride	12-15 ppm

Standard Packing: 1,000 kgs (2,200 lbs.) or 2,000 kgs (4,400 lbs.) top and bottom spouted bulk bags with internal liner



# Texan Stone LLC

11806 Wilcrest Drive, Suite 202, Houston, TX 77031  
Phone: 281-741-0226 Email: Mani@texanstone.com



## STAR-O-RIGHT

### STAUROLITE CONCENTRATE SPECIFICATION SHEET

#### Chemical and Physical Analysis

<u>Parameters</u>	<u>Typical (%)</u>
Al <sub>2</sub> O <sub>3</sub> + TiO <sub>2</sub>	45 - 51%
SiO <sub>2</sub>	28 - 29%
Quartz	0.5 – 1.0% max.
Respirable Crystalline Silica	Less than 0.01%
Moisture	0.1% - 0.5%
Chloride	6 PPM
Conductivity	70 µS/cm
Color	Dark Brown
Bulk Density	130 lbs./ft <sup>3</sup>
Specific Gravity	3.7 – 3.8
Grain Shape	Sub-angular
Solubility	Insoluble
Hardness	7 – 7.5 Mohs

#### Size Analysis July 2018

<u>Mesh</u>	<u>Microns</u>	<u>Retention (%)</u>	
		<u>Retained</u>	<u>Cumulative</u>
60	250	0.5-1.0	0.5-1
70	210	12-13	12.5-13.5
80	177	42-44	53-56
100	149	28-30	81-85
120	125	12-14	93-97
140	105	2	95 –99
170	88	0.5-1	96-99.5
200	74	0.25	98-100
Pan	-	0.01	100

**Note: Staurolite is a natural product and as such slight variations in the chemical analysis and size distribution should be expected.**

**Comparable to DuPont Starblast XL and Opta Powerblast XC Staurolite.**